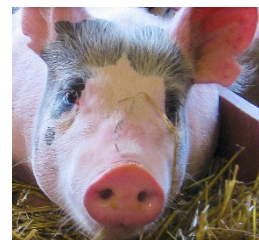


Lucas County 4-H Swine Project Overview



Helpful information for your hog project.

The contents of this guide are meant to be just that, a **guide and may be subject to change without notice. Be vigilant about referencing the Lucas County Fair website for the most up to date information regarding the fair.

Swine Project Overview

There are two swine projects that you can enroll in as a 4-H member. Here's a brief summary of each project:

4-H #	Title	Description
139	Market Hog	Raise and show a Market Hog to a minimum weight of 210 lbs. (at fair weigh-in)
140	Swine Breeding	Raise and show a Breeding Gilt

Project Literature

You will need the following project materials for your Swine project:

- **Swine Project Handbook** (\$28) - Designed to be used for all years of your swine projects
- **Swine Project Record Book** (\$12) - Obtain and keep for the resource information it contains.
 - One record book per year, even if you are taking multiple types of rabbit projects.
 - You will need to purchase a new record book each year you take a rabbit project.

**Note to those with Market Animal Projects; as a food animal producer you are required, by law, to keep a record of any treatments, medications, drugs, etc. that are used for the health of your animal. Use the Treatment Record within your Lucas County Livestock Record Insert to keep this information.

IMPORTANT DATES FOR 4-H PARTICIPATION: * = Mandatory

Activity	Due Date	Location	Reference Page # (in this guide)
*Enroll in 4-H	No later than April 1	https://v2.4honline.com/#/user/sign-in	2
*4-H Project Interview Judging	Monday of Fair	Lucas County Fairgrounds Entertainment Tent	2
*County Fair Entry	May 15	https://go.osu.edu/lclivestockfaireentry	3
*Skill-a-thon	Monday of Fair	Lucas County Fairgrounds Entertainment Tent	3

Activities that will take place prior to the Lucas County Fair

The following 4-H activities are described below.

4-H Enrollment

Membership requires enrollment in an authorized Ohio 4-H club or group under the direction of an OSU Extension professional or an approved adult volunteer. Your 4-H club Advisor will assist you with the online enrollment process. Joining Ohio 4-H is a privilege and responsibility for individuals and is subject to the Ohio 4-H Code of Conduct and applicable policies of The Ohio State University. Members must remain in good standing with their 4-H club, meaning attending a minimum of five meetings, completing a demonstration, fully participating, etc.

Project Interview

Project judging is an exciting time to showcase your hard work spent on your 4-H project. Our judges love talking with you and learning about your project. Please be patient and understand if a judge is running behind. Thank you in advance for your cooperation.

Tips to be Successful

- Arrive at the Entertainment tent with your record books. Remember to wear nice attire to judging. See Dress Code below.
- Check in at the registration desk.
- Be prepared to talk about your project, know what you did, how you did it, and what you learned. Be proud of your accomplishments! You worked hard. Have a seat, talk to friends and RELAX!

Dress Code Rule for All Junior Fair Exhibitors

The Junior Fair Dress Code is in effect for Livestock Shows and all Interview Judging Days.

- Livestock Interview: No rips or cut-offs and no tank-tops or sleeveless tops. Appropriate length shorts or pants.

- Livestock Shows: exhibitors must wear a white long sleeve buttoned shirt or white lab coat. Pants should be black, khakis or jeans, reach exhibitors shoes and have no holes. Shoes are closed toe.
- ****Consequences for not following this rule may include class disqualification, or no interview until wardrobe is changed.**

Skill-a-thon

This is where you have the chance to shine as an exhibitor. This is a contest to show who knows the most about their species. You will study various topics on swine and then at 4-H Project Interview, you will go into the skill-a-thon and answer the questions they pose for you. There are 3 levels: juniors (8-12 years old), Intermediate (13-15 years old) and seniors (16-18 years old.) The exhibitors with the highest scores can earn ribbons and then have a chance to earn cash prizes.

- The Swine Skill-a-thon is an activity that takes place prior to fair, at 4-H Project Interview. It is a series of stations on topics you are learning about in your swine project. The goal of the Skill-a-thon is to facilitate learning about your Swine project.
- Prizes are awarded to exhibitors who perform well in the Skill-a-thon. Prizes typically include cash and rosettes which are handed out at Sunday awards in the Livestock Arena.

Congratulations on the successful completion of your project!

County Fair Entry

For exhibition information, such as move-in, possession and show information, visit the Lucas County Fair junior fair exhibition rules at: <https://lucascountyfair.com/exhibitors/#junior> then select “Livestock Rules”

- Fair Entry is due **May 15** and is completed online using this link: <https://go.osu.edu/lclivestockfairentry>
- Late or edited entries will be accepted until **May 22 with a \$50 fee payable to the Lucas County Fair.**
- For Entries after the late entry date, May 22, penalties are Grade and Exhibition only, \$50 fee, no premium, awards, or auction. Exhibition request will need approval.

Selecting a Quality Animal

- Your 4-H Advisor can assist you in finding sources of animals.
- It is highly advisable to seek out a reputable breeder to obtain your project animal. A good breeder wants you to be successful with your project and with the animal(s) they are offering. It is not advisable to look toward sale barns (stockyards) for project animals as you will not know the breed, health status or anything else about the animal you are getting.
- Create a relationship with a veterinarian in your area. Verify that they are willing and able to see your animal(s) should the need arise and share contact information so that you are prepared.

Getting started

- Make sure pen size is adequate. 6'x 6' minimum per head.
- Straw or wood shavings can be used for bedding. Concrete floor is best because hogs like to root and can be destructive to stone or dirt floors.
- Make sure building has good ventilation and ample amount of shade from direct sun. **HOGS WILL SUNBURN EASILY!!**
- Supply CLEAN water often.
- Fresh feed can be offered in a self-feeder or fed by hand.
 - A hog should consume approximately 6 lb. of feed per day.
 - They should have an average daily gain of 2 lb.
- Do not switch feed all at once. Use a gradual method of introducing new feed. Check with breeder or local feed store nutritionist for feed recommendations.

Working With Your Hog

- Begin when you take possession of your hog.
- You may use a whip, length of PVC pipe, or cane to drive your hog.
- Start out walking in a small, confined area and as the hog(s) get used to you, gradually start walking them in a larger space.
- Work 15-20 minutes daily with your hog(s) to help build stamina.
- Never hit the hog on the loin (back) or the ham (butt). When needed tap them on their sides.
- Be cautious with excess use of whip or cane especially with white hogs as they can leave marks.
- When temperatures are warm you can begin bathing your hog. Avoid getting water in their ears! If the hog is very warm, just put water on their nose to avoid sudden cold-water shock which can lead to death of animal.