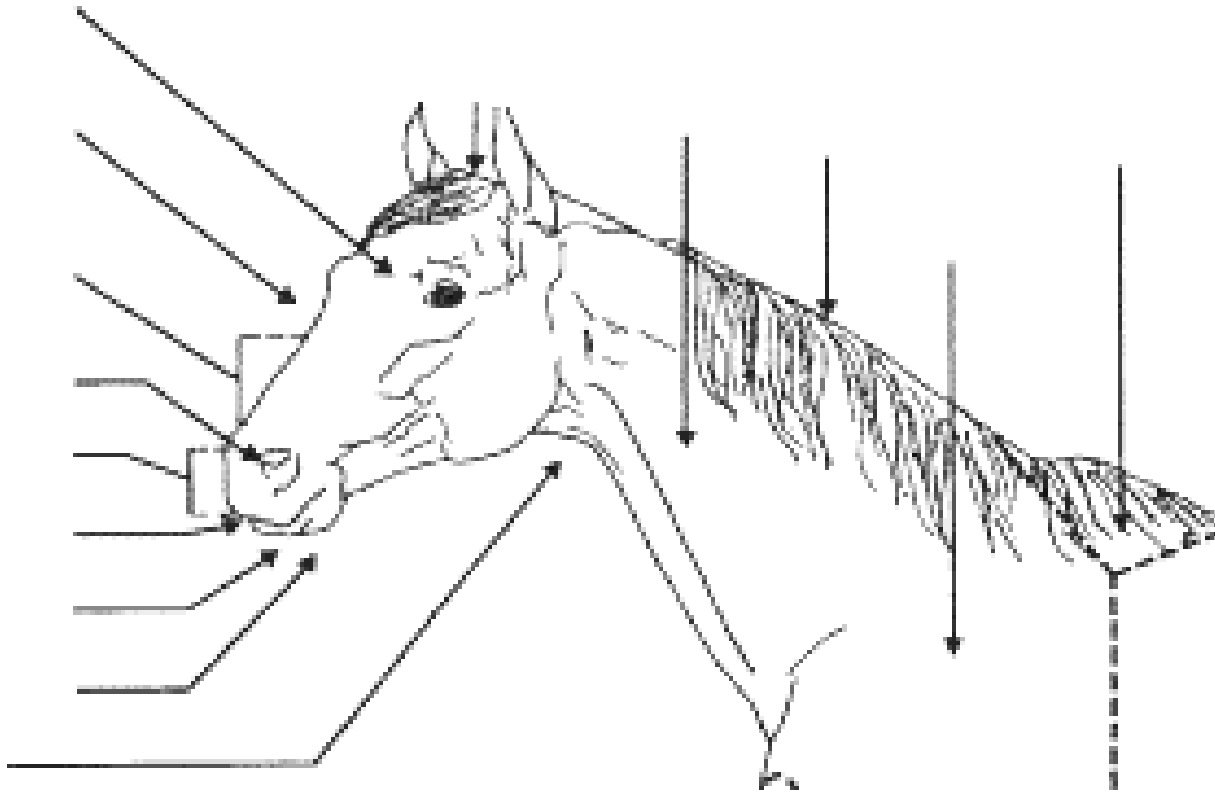


EQUINE SKILLATHON ~ Name _____ Club _____

1st YEAR ~ BEGINNER DIVISION -- PARTS OF A HORSE - NAME THESE 10 PARTS

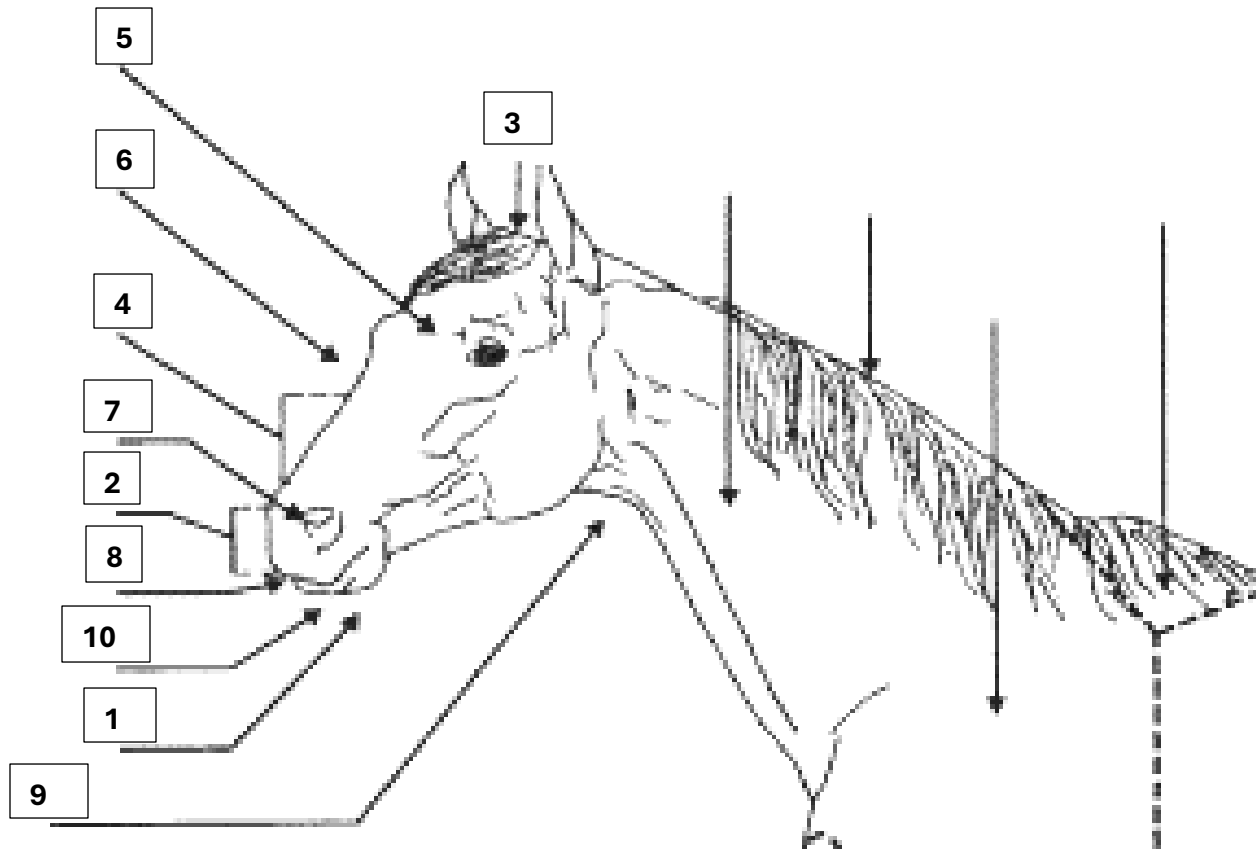
WRITE THE CORRECT PART NUMBER ON THE HORSE'S BODY

1. UNDER LIP/CHIN
2. MUZZLE
3. POLL
4. BRIDGE/NOSE
5. FORHEAD
6. FACE
7. NOSTRIL
8. UPPER LIP
9. THROAT LATCH
10. LOWER LIP



ANSWER KEY

1st YEAR ~ BEGINNER DIVISION -- PARTS OF A HORSE -- NAME 10 PARTS



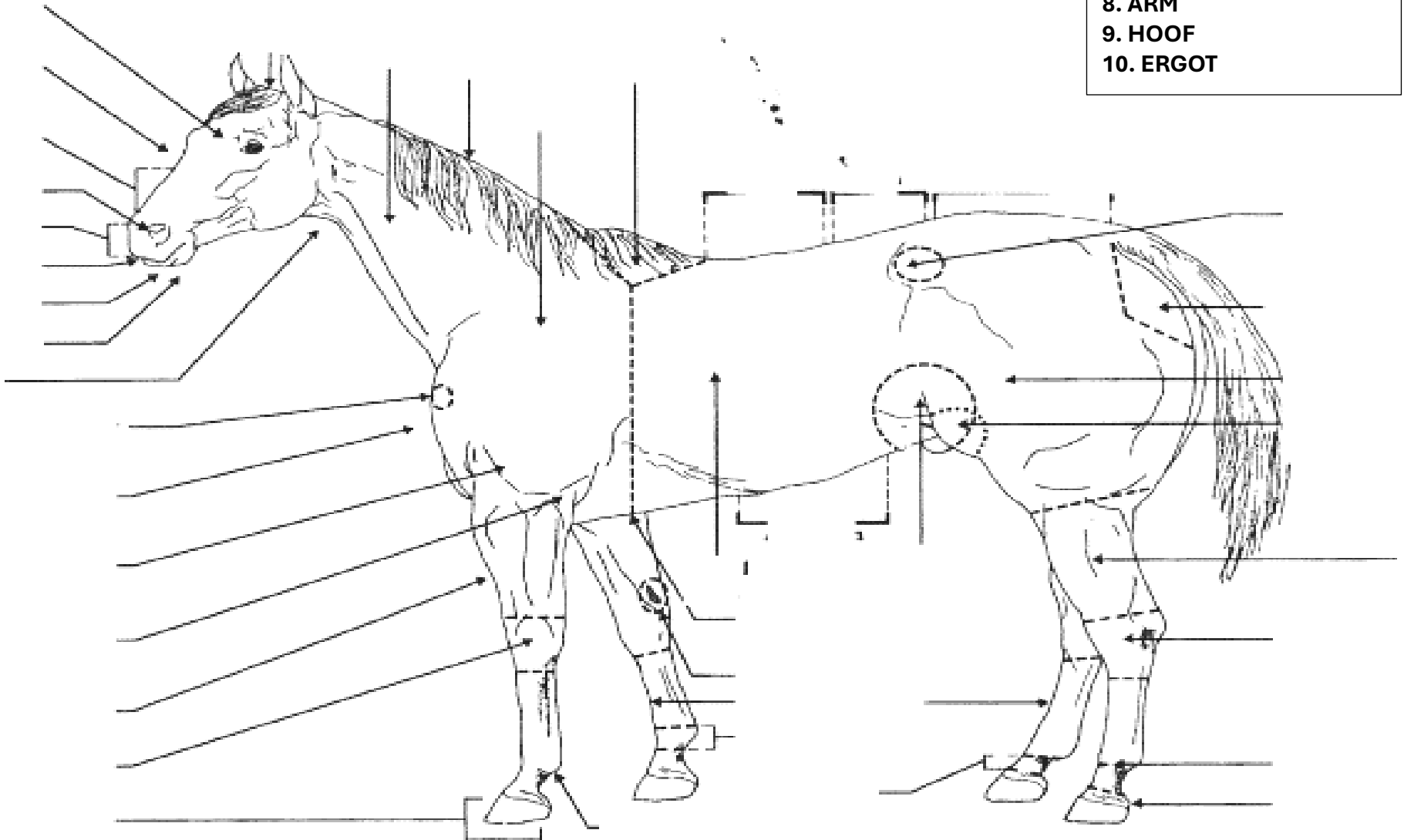
- 1. UNDER LIP/CHIN
- 2. MUZZLE
- 3. POLL
- 4. BRIDGE/NOSE
- 5. FORHEAD
- 6. FACE
- 7. NOSTRIL
- 8. UPPER LIP
- 9. THROAT LATCH
- 10. LOWER LIP

EQUINE SKILLATHON ~ Name _____ Club _____

2nd YEAR ~ BEGINNER DIVISION -- PARTS OF A HORSE - NAME THESE 10 PARTS

WRITE THE CORRECT PART NUMBER ON THE HORSE'S BODY

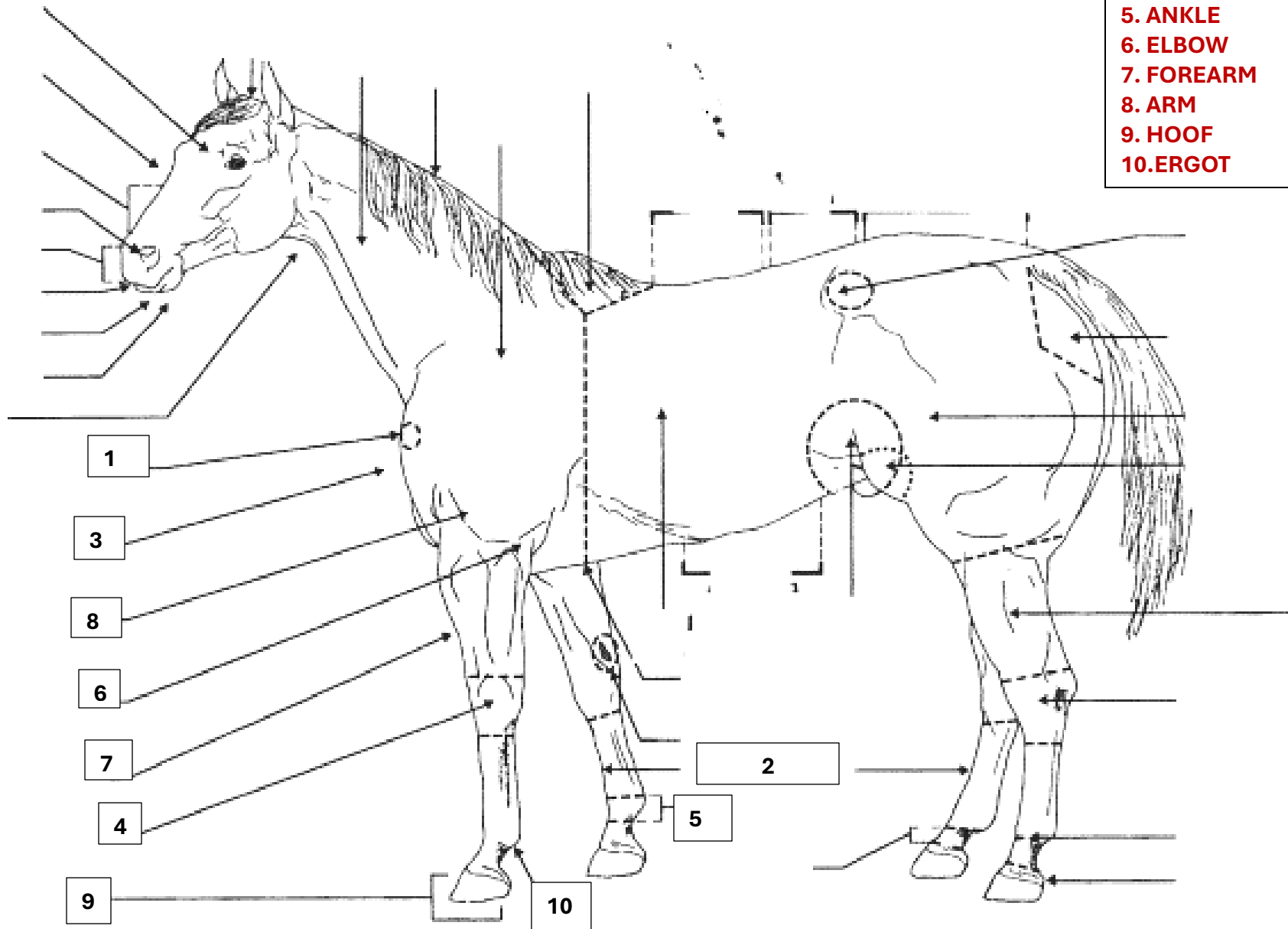
1. POINT OF SHOULDER
2. CANNON
3. CHEST
4. KNEE
5. ANKLE
6. ELBOW
7. FOREARM
8. ARM
9. HOOF
10. ERGOT



ANSWER KEY

2nd YEAR ~ BEGINNER DIVISION -- PARTS OF A HORSE - NAME 10 PARTS

- 1. POINT of SHOULDER**
- 2. CANNON BONES**
- 3. CHEST**
- 4. KNEE**
- 5. ANKLE**
- 6. ELBOW**
- 7. FOREARM**
- 8. ARM**
- 9. HOOF**
- 10. ERGOT**

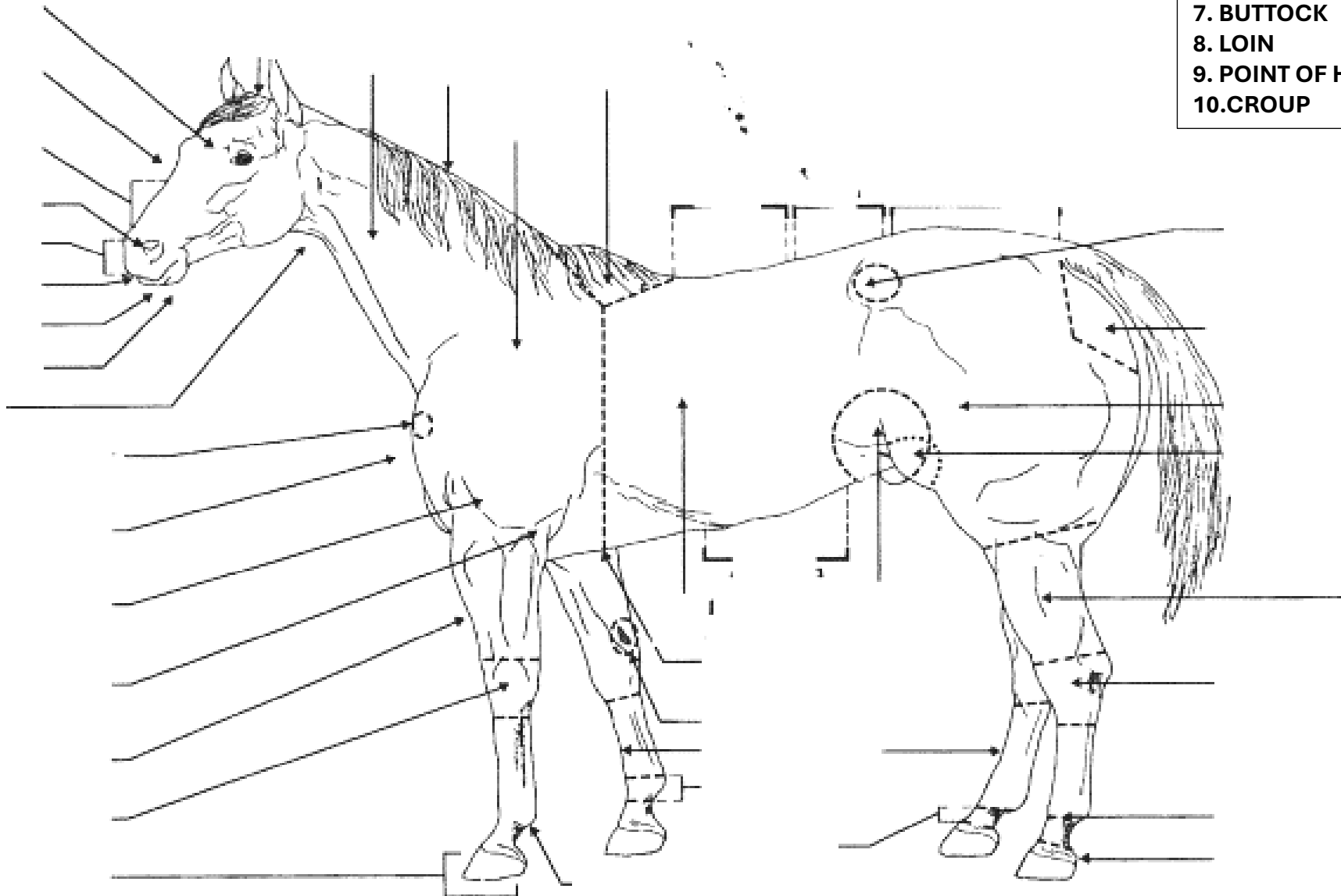


EQUINE SKILLATHON ~ Name _____ Club _____

3rd YEAR ~ BEGINNER DIVISION -- PARTS OF A HORSE -- NAME THESE 10 PARTS

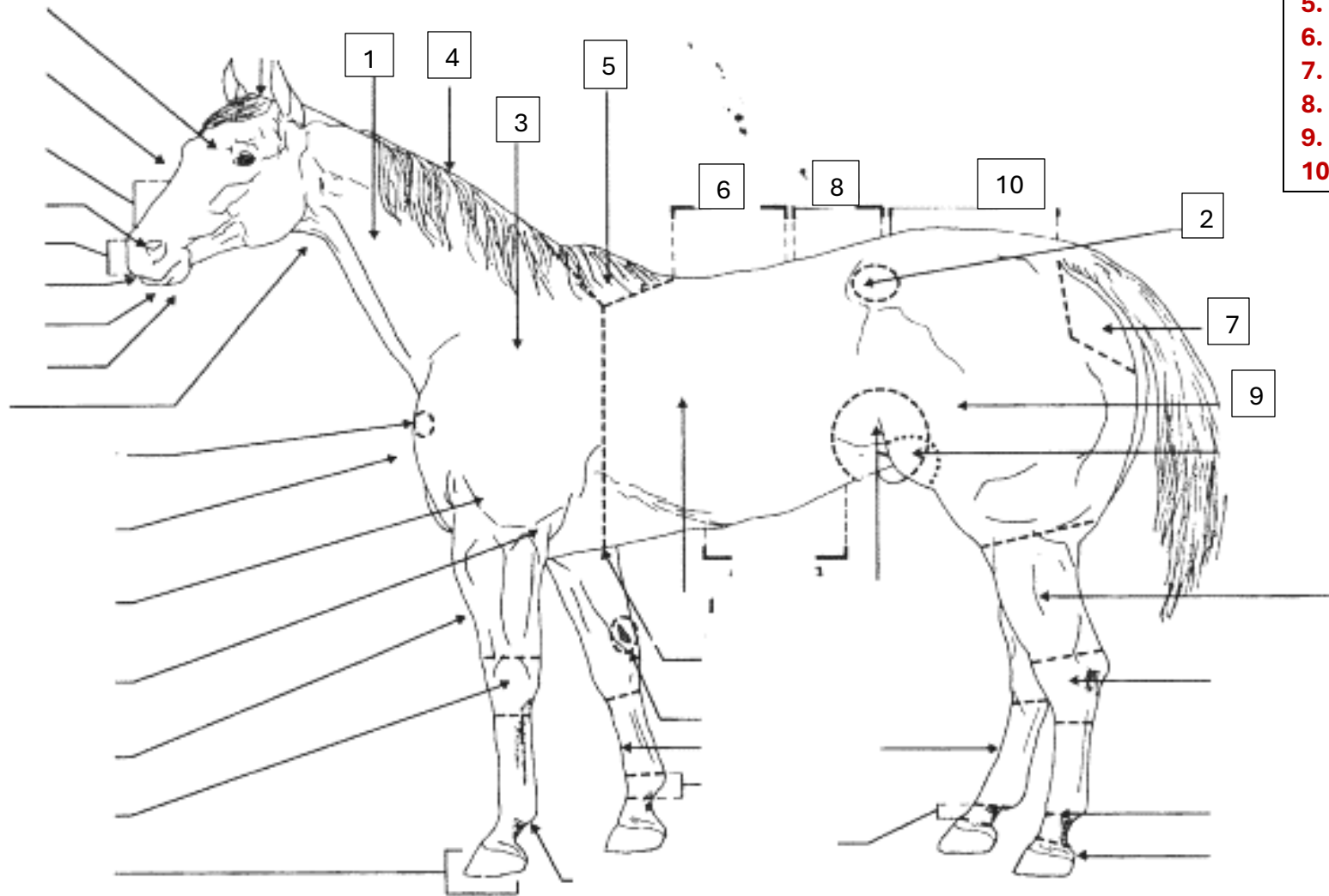
WRITE THE CORRECT PART NUMBER ON THE HORSE'S BODY

- 1. NECK
- 2. POINT OF HIP
- 3. SHOULDER
- 4. CREST
- 5. WITHERS
- 6. BACK
- 7. BUTTOCK
- 8. LOIN
- 9. POINT OF HIP
- 10. CROUP



ANSWER KEY

3rd YEAR ~ BEGINNER DIVISION — PARTS OF A HORSE — NAME 10 PARTS



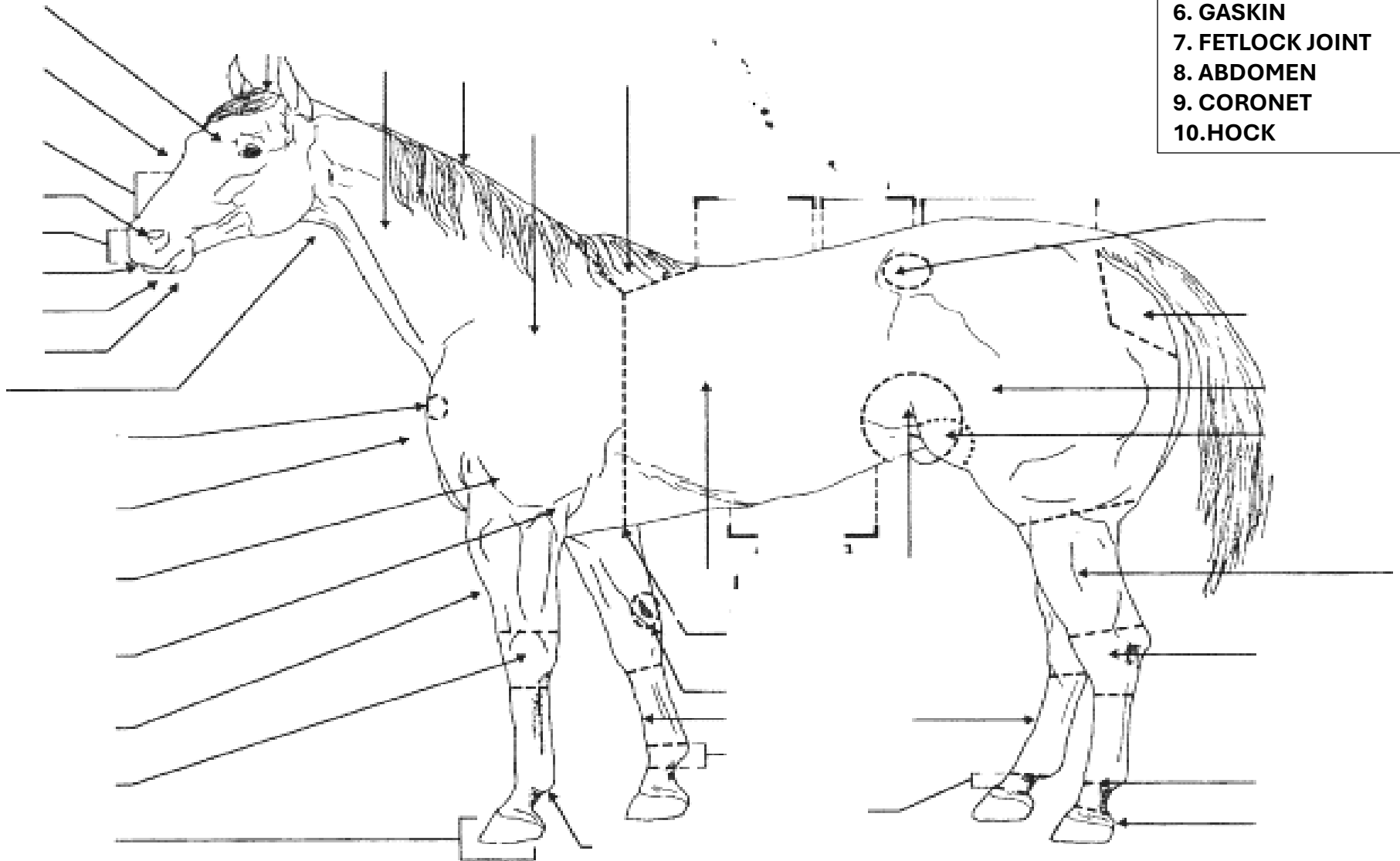
- 1. NECK
- 2. POINT OF HIP
- 3. SHOULDER
- 4. CREST
- 5. WITHERS
- 6. BACK
- 7. BUTTOCK
- 8. LOIN
- 9. POINT OF HIP
- 10. CROUP

EQUINE SKILLATHON ~ Name _____ Club _____

4th YEAR ~ INTERMEDIATE DIVISION -- PARTS OF A HORSE - NAME THESE 10 PARTS

WRITE THE CORRECT PART NUMBER ON THE HORSE'S BODY

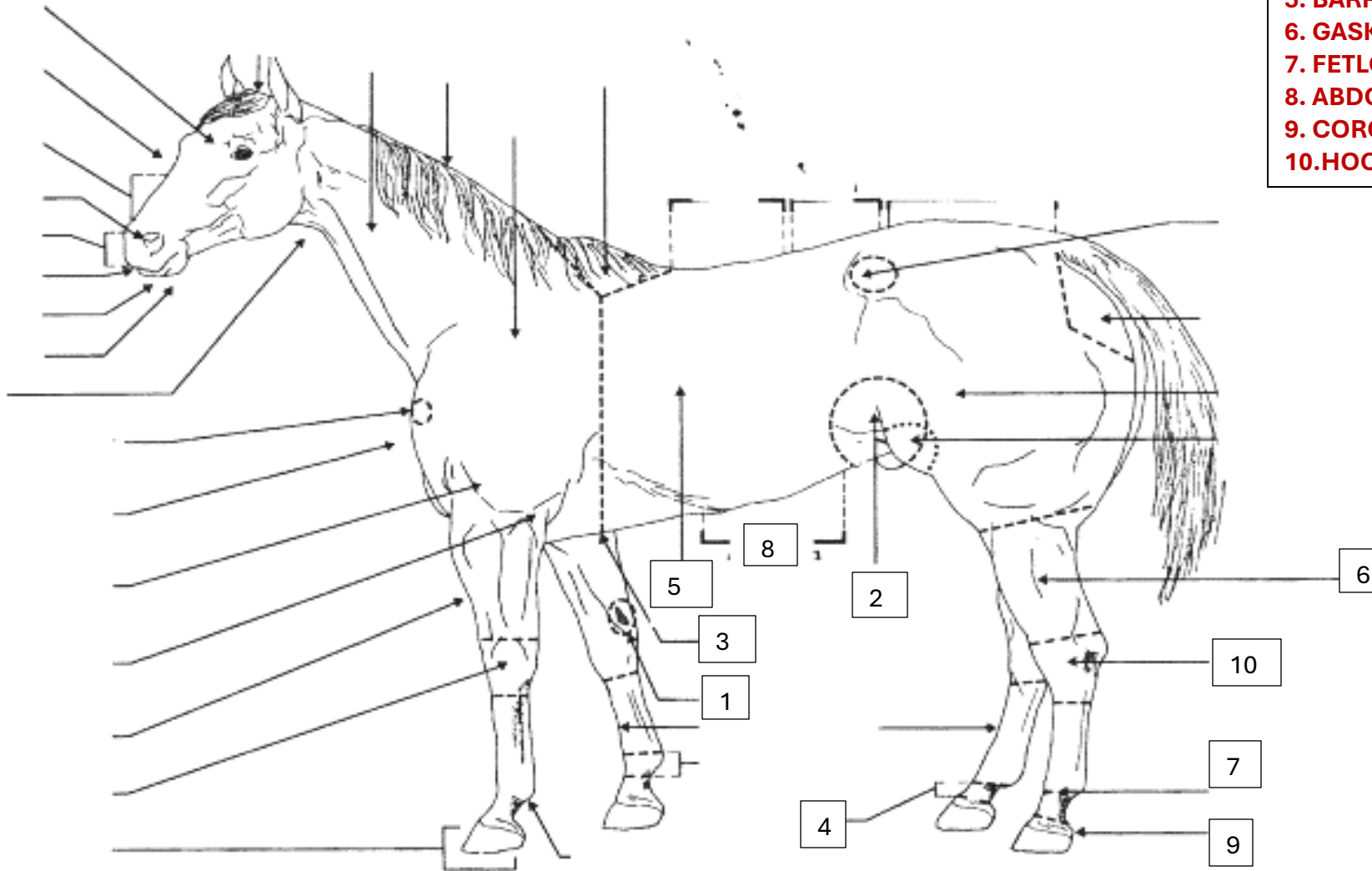
1. CHESTNUT
2. FLANK
3. HEARTGIRTH
4. PASTERN
5. BARREL AREA
6. GASKIN
7. FETLOCK JOINT
8. ABDOMEN
9. CORONET
10. HOCK



ANSWER KEY

4th YEAR ~ INTERMEDIATE DIVISION -- PARTS OF A HORSE -- NAME 10 PARTS

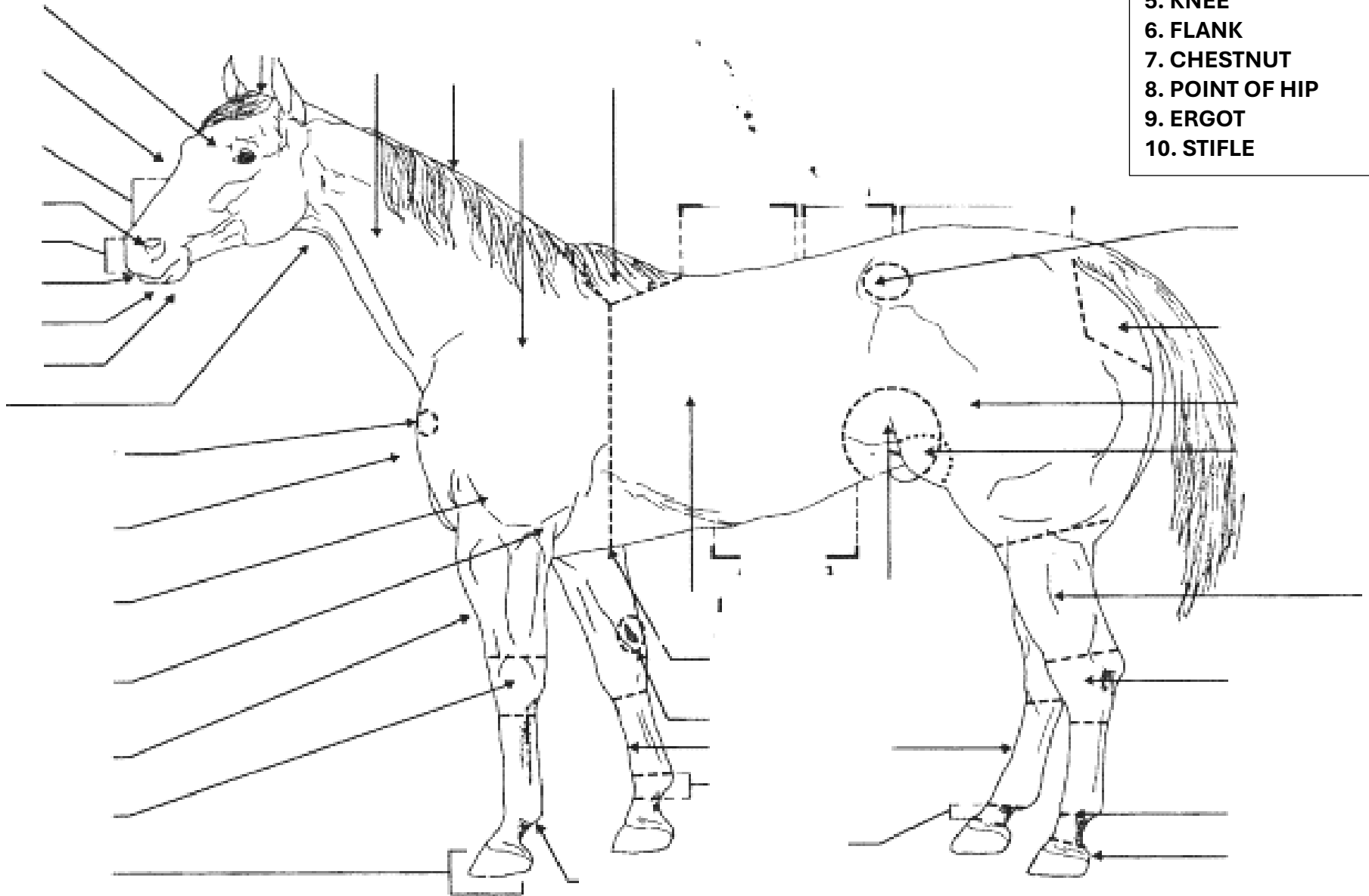
- 1. CHESTNUT
- 2. FLANK
- 3. HEARTGIRTH
- 4. PASTERN
- 5. BARREL AREA
- 6. GASKIN
- 7. FETLOCK JOINT
- 8. ABDOMEN
- 9. CORONET
- 10. HOCK



5th YEAR ~ INTERMEDIATE DIVISION -- PARTS OF A HORSE -- NAME THESE 10 PARTS

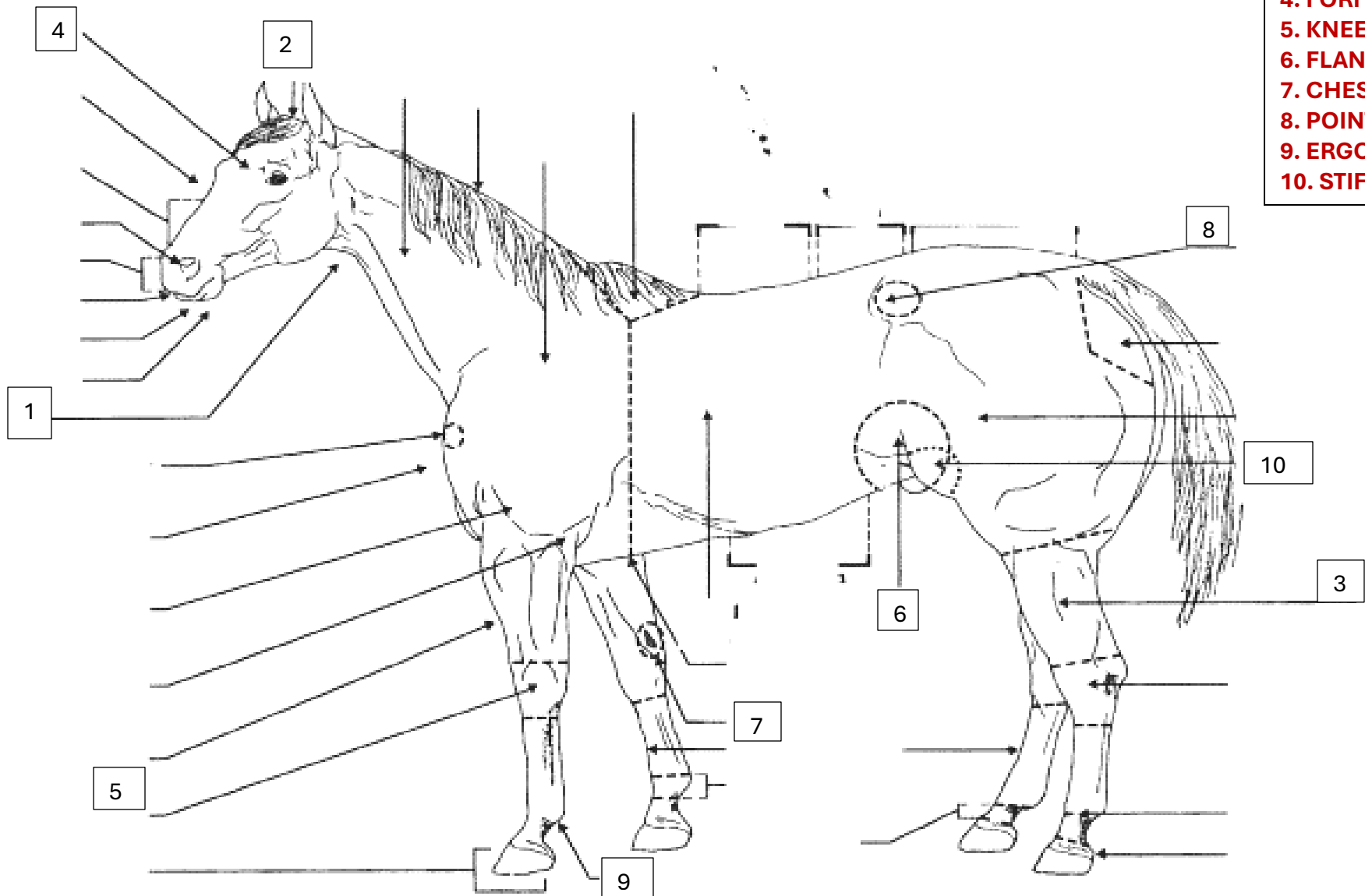
WRITE THE CORRECT PART NUMBER ON THE HORSE'S BODY

1. THROATLATCH
2. POLL
3. GASKIN
4. FORHEAD
5. KNEE
6. FLANK
7. CHESTNUT
8. POINT OF HIP
9. ERGOT
10. STIFLE



ANSWER KEY

5th YEAR ~ INTERMEDIATE DIVISION -- PARTS OF A HORSE - NAME 10 PARTS



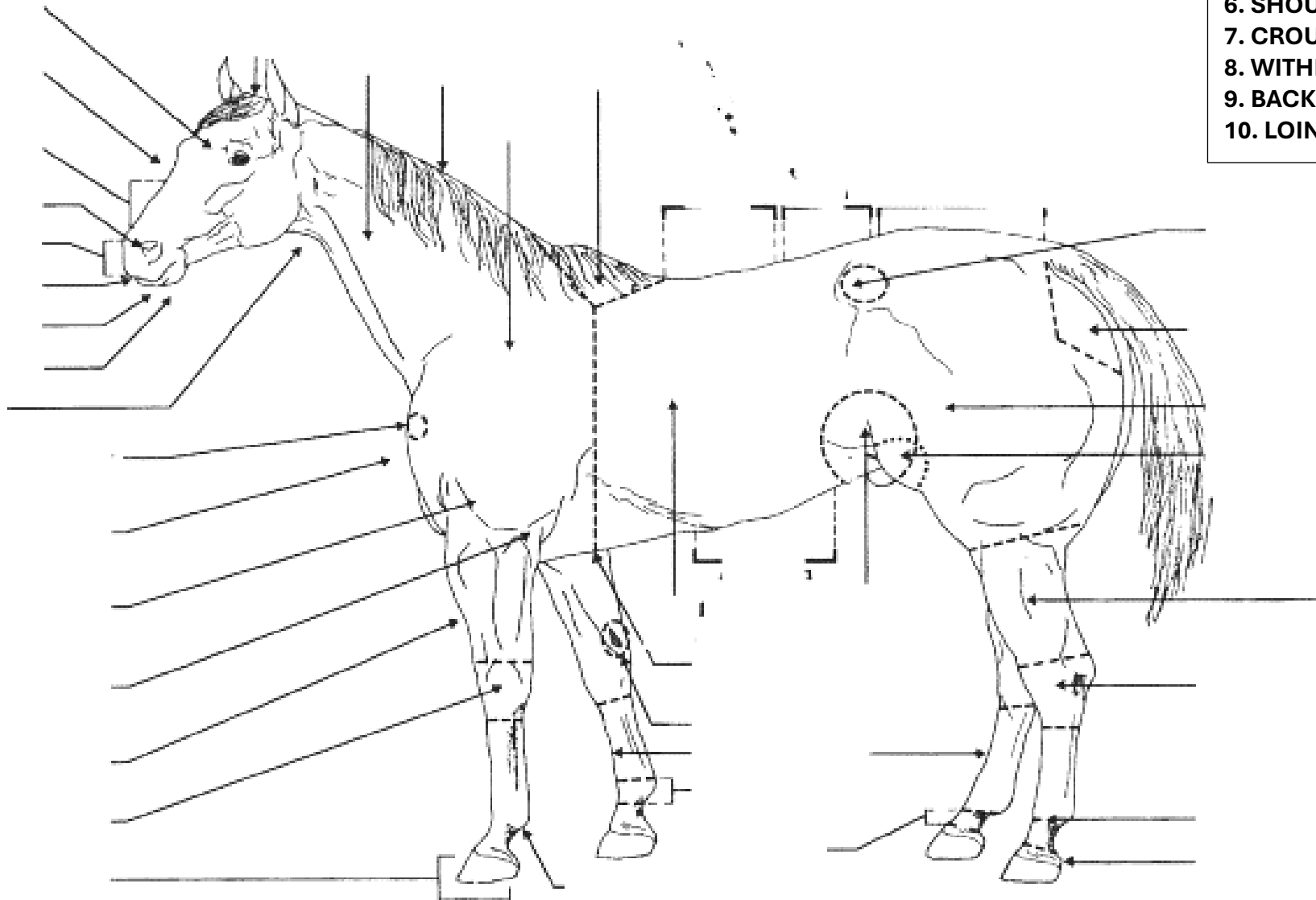
- 1. THROATLATCH
- 2. POLL
- 3. GASKIN
- 4. FORHEAD
- 5. KNEE
- 6. FLANK
- 7. CHESTNUT
- 8. POINT OF HIP
- 9. ERGOT
- 10. STIFLE

EQUINE SKILLATHON ~ Name _____ Club _____

6th YEAR ~ INTERMEDIATE DIVISION -- PARTS OF A HORSE - NAME 10 PARTS

WRITE THE CORRECT PART NUMBER ON THE HORSE'S BODY

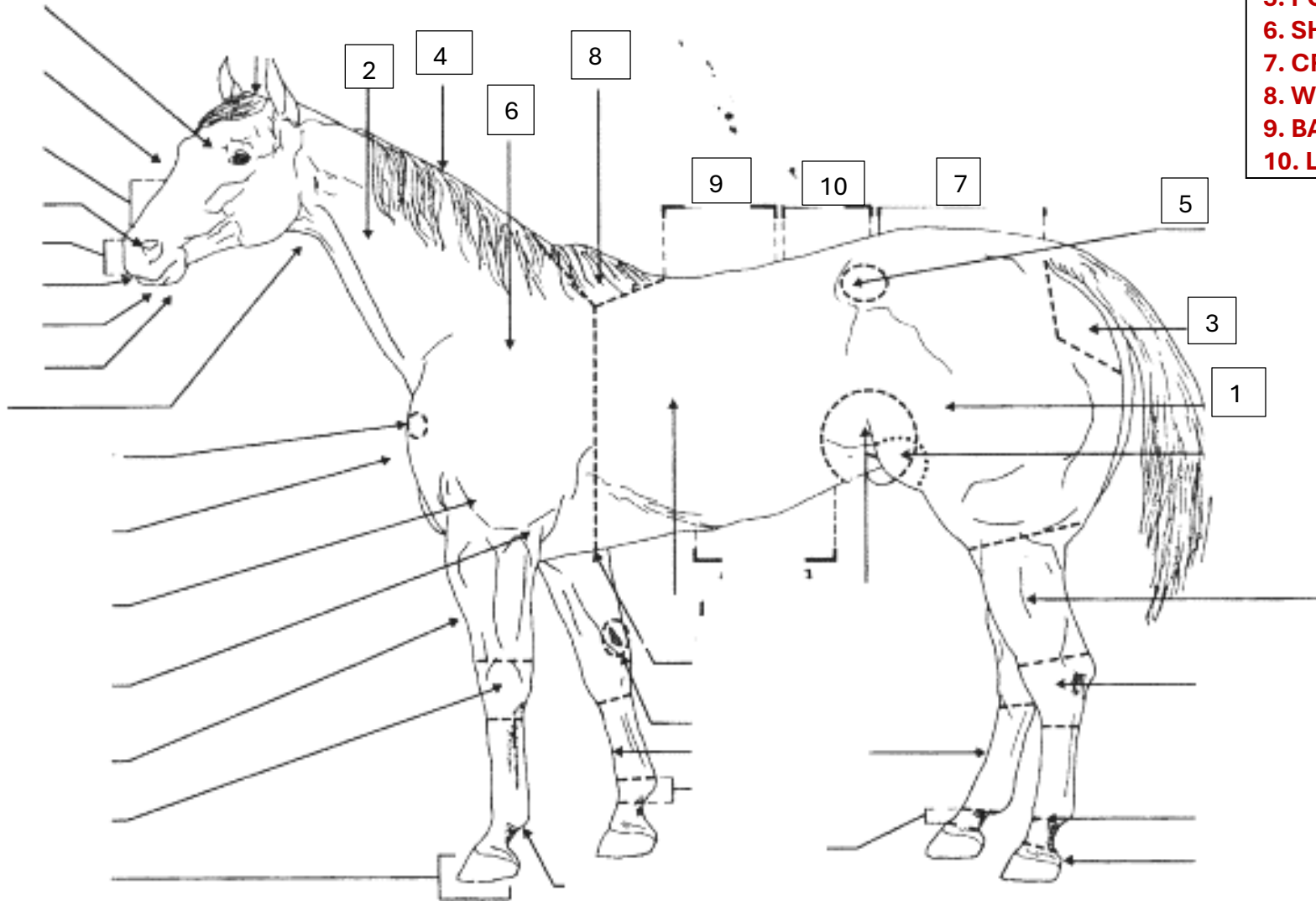
- 1. HIP
- 2. NECK
- 3. BUTTOCK
- 4. CREST
- 5. POINT OF HIP
- 6. SHOULDER
- 7. CROUP
- 8. WITHERS
- 9. BACK
- 10. LOIN



ANSWER KEY

6th YEAR ~ INTERMEDIATE DIVISION -- PARTS OF A HORSE - NAME 10 PARTS

- 1. HIP
- 2. NECK
- 3. BUTTOCK
- 4. CREST
- 5. POINT OF HIP
- 6. SHOULDER
- 7. CROUP
- 8. WITHERS
- 9. BACK
- 10. LOIN

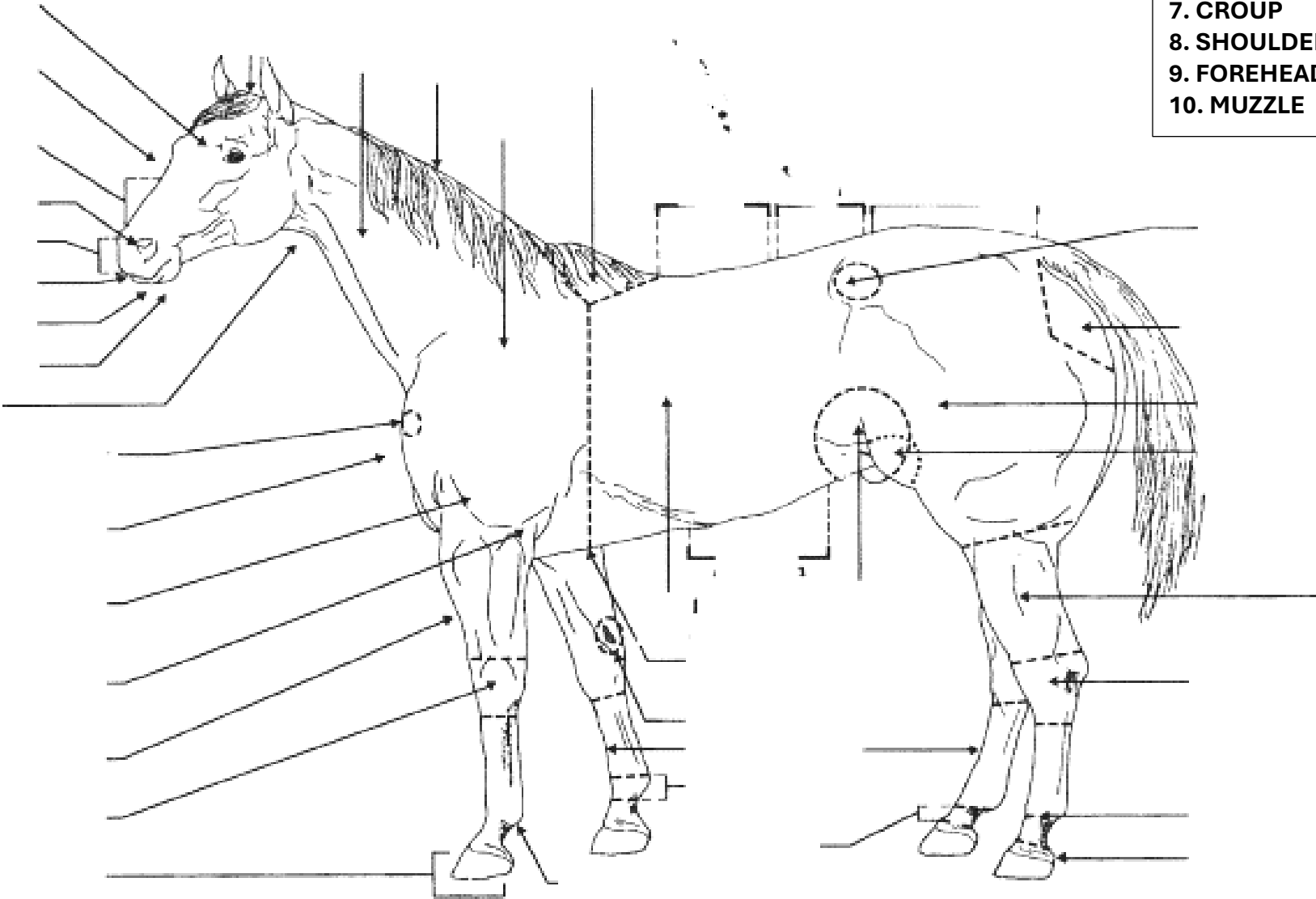


EQUINE SKILLATHON ~ Name _____ Club _____

7th YEAR ~ ADVANCE DIVISION -- PARTS OF A HORSE - NAME 10 PARTS

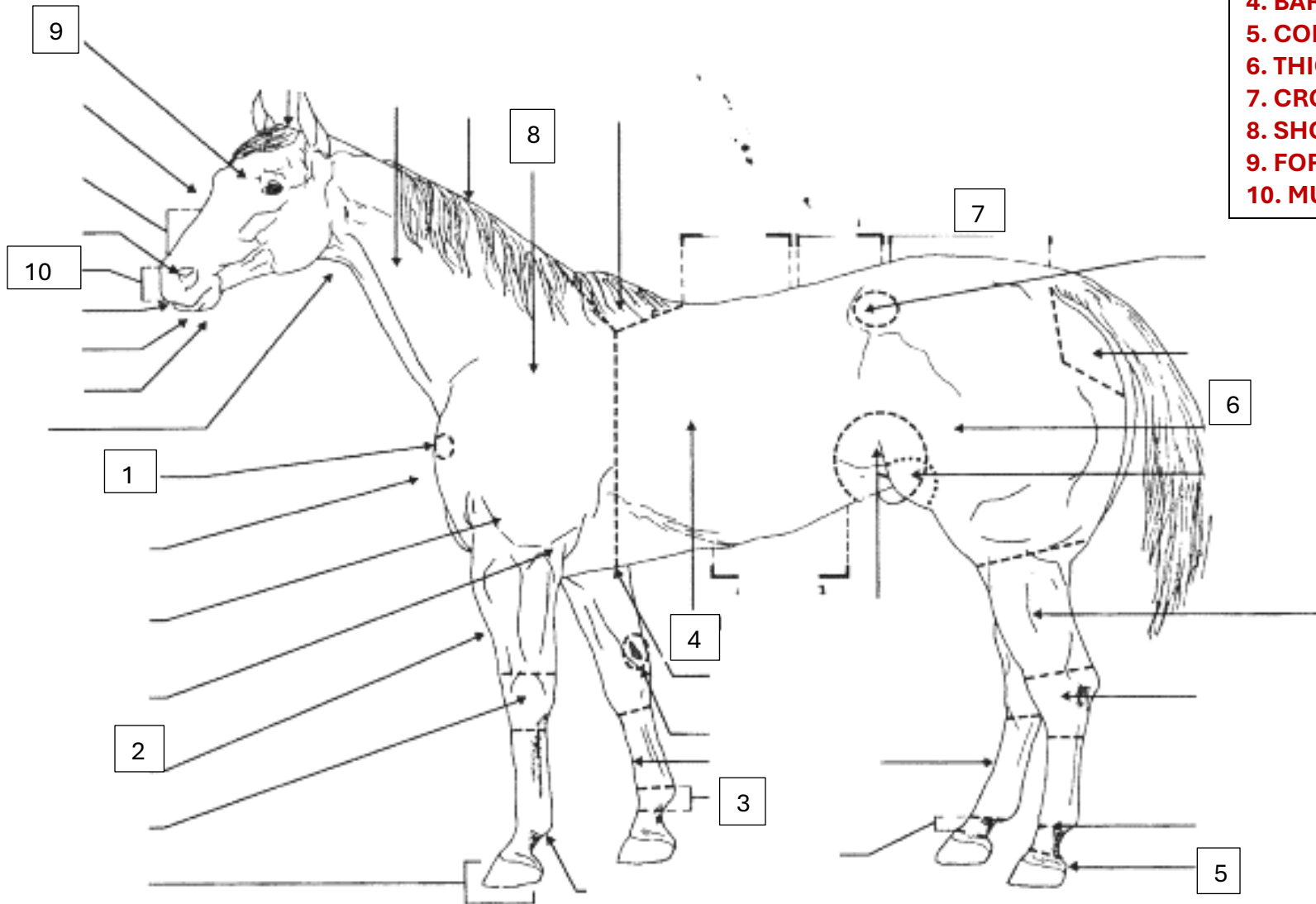
WRITE THE CORRECT PART NUMBER ON THE HORSE'S BODY

- 1. POINT OF SHOULDER
- 2. FOREARM
- 3. ANKLE
- 4. BARREL AREA
- 5. CORONET
- 6. THIGH AREA
- 7. CROUP
- 8. SHOULDER
- 9. FOREHEAD
- 10. MUZZLE



ANSWER KEY

7th YEAR ~ ADVANCE DIVISION -- PARTS OF A HORSE - NAME 10 PARTS

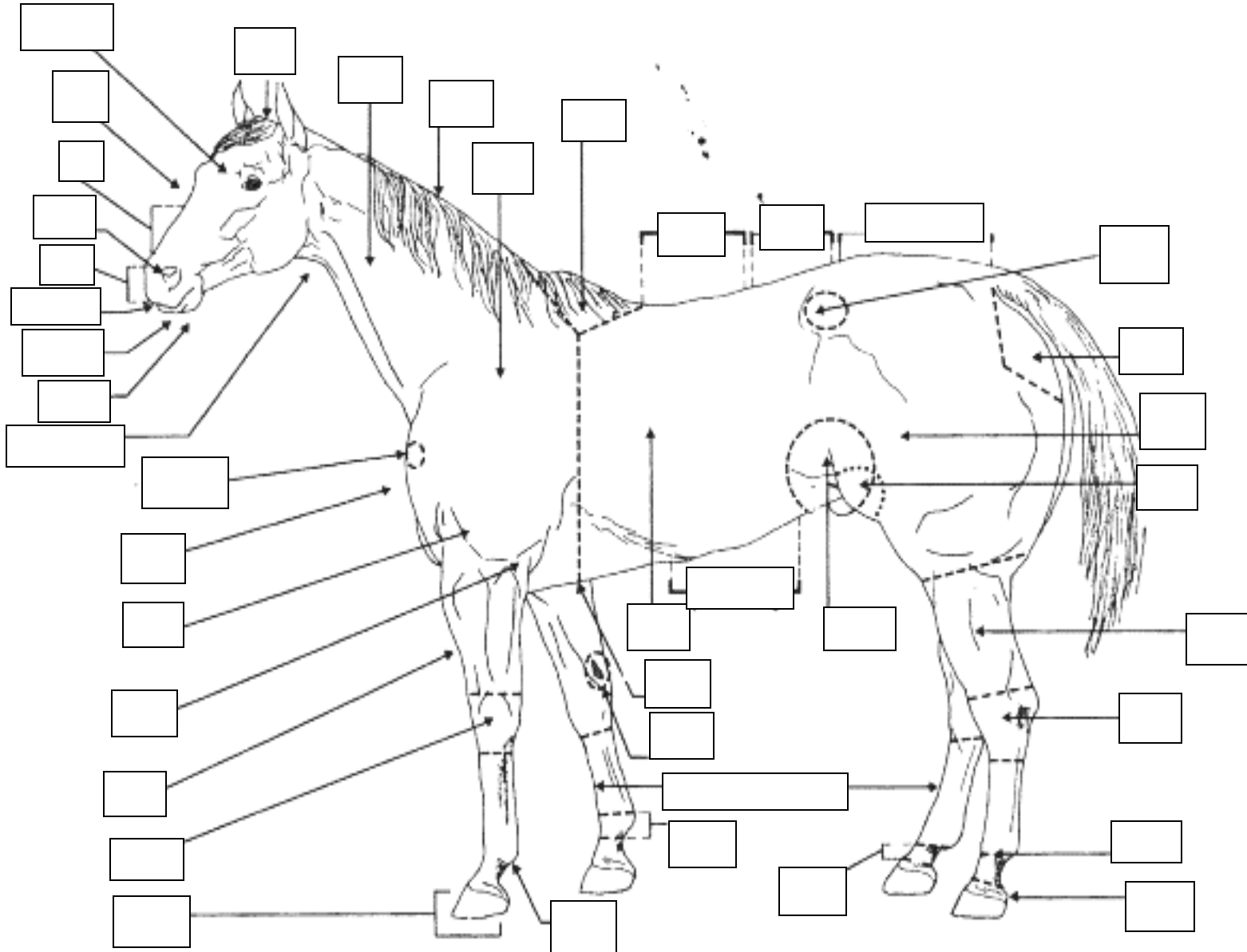


- 1. POINT OF SHOULDER**
- 2. FOREARM**
- 3. ANKLE**
- 4. BARREL AREA**
- 5. CORONET**
- 6. THIGH AREA**
- 7. CROUP**
- 8. SHOULDER**
- 9. FOREHEAD**
- 10. MUZZLE**

EQUINE SKILLATHON ~ Name _____ Club _____

8th – 12th YEARS ~ ADVANCE DIVISION -- PARTS OF A HORSE – NAME ALL PARTS

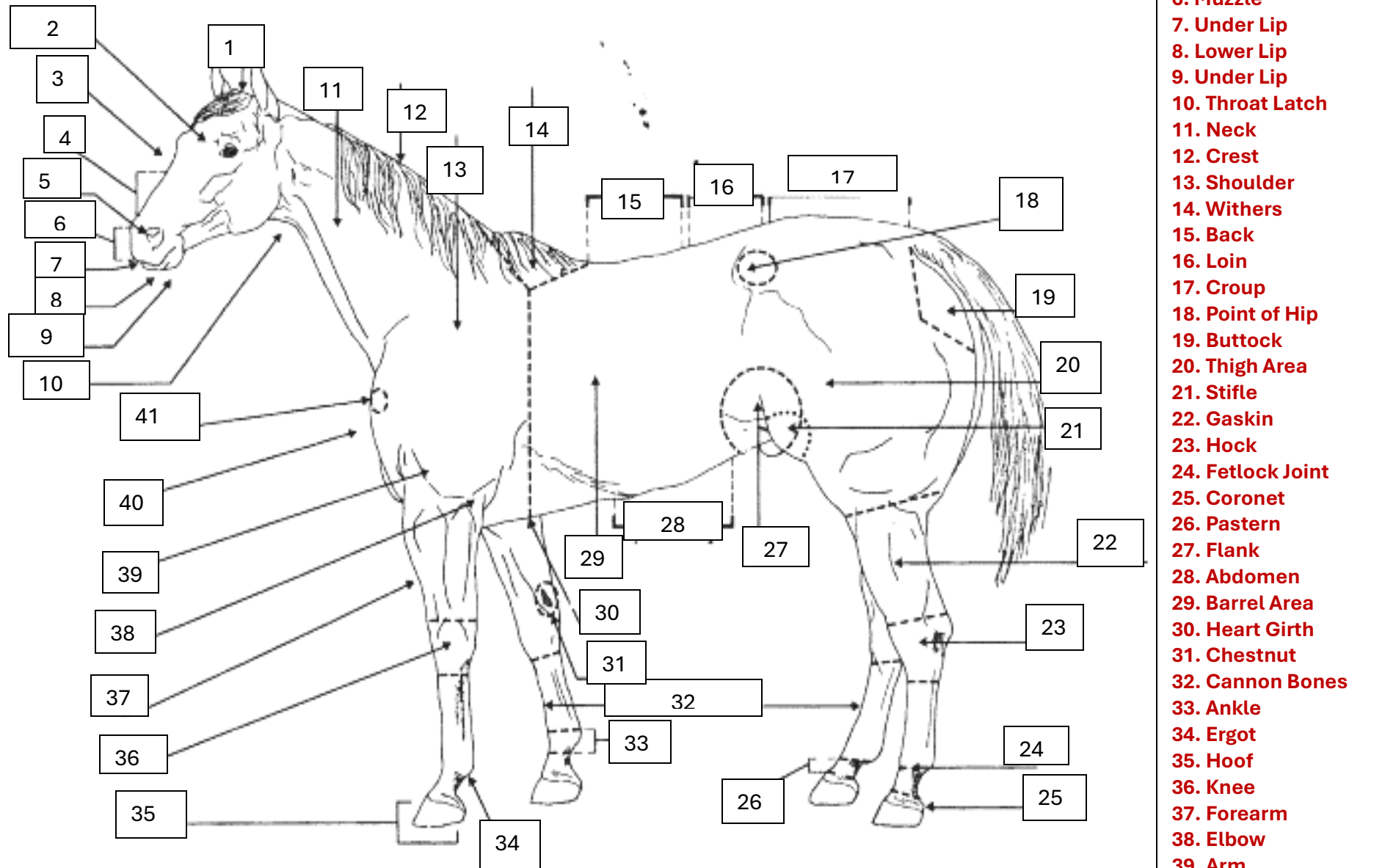
WRITE THE CORRECT PART NUMBER ON THE HORSE'S BODY



1. Poll
2. Forehead
3. Face
4. Bridge of Nose
5. Nostril
6. Muzzle
7. Under Lip
8. Lower Lip
9. Under Lip
10. Throat Latch
11. Neck
12. Crest
13. Shoulder
14. Withers
15. Back
16. Loin
17. Croup
18. Point of Hip
19. Buttock
20. Thigh Area
21. Stifle
22. Gaskin
23. Hock
24. Fetlock Joint
25. Coronet
26. Pastern
27. Flank
28. Abdomen
29. Barrel Area
30. Heart Girth
31. Chestnut
32. Cannon Bones
33. Ankle
34. Ergot
35. Hoof
36. Knee
37. Forearm
38. Elbow
39. Arm
40. Chest
41. Point of Shoulder

ANSWER KEY

8th - 12th YEARS ~ ADVANCE DIVISION -- PARTS OF A HORSE - NAME ALL PARTS



1. Poll
2. Forehead
3. Face
4. Bridge of Nose
5. Nostril
6. Muzzle
7. Under Lip
8. Lower Lip
9. Under Lip
10. Throat Latch
11. Neck
12. Crest
13. Shoulder
14. Withers
15. Back
16. Loin
17. Croup
18. Point of Hip
19. Buttock
20. Thigh Area
21. Stifle
22. Gaskin
23. Hock
24. Fetlock Joint
25. Coronet
26. Pastern
27. Flank
28. Abdomen
29. Barrel Area
30. Heart Girth
31. Chestnut
32. Cannon Bones
33. Ankle
34. Ergot
35. Hoof
36. Knee
37. Forearm
38. Elbow
39. Arm
40. Chest
41. Point of Shoulder